



**Avant<sup>®</sup> Seating**



2016

**Rio de Janeiro Summer Olympics, Brazil**

2008

**Beijing Summer Olympics, China**



2018

Jakarta Asian Games, Indonesia

2017

Universiade, Taiwan

2015

World Women's Handball Championship, Denmark

2014

Copa America, Chile

2013

South East Asian Games, Myanmar

2012

World Handball Championship, Oman

2011

Universiade, China

2010

Formula 1, South Korea

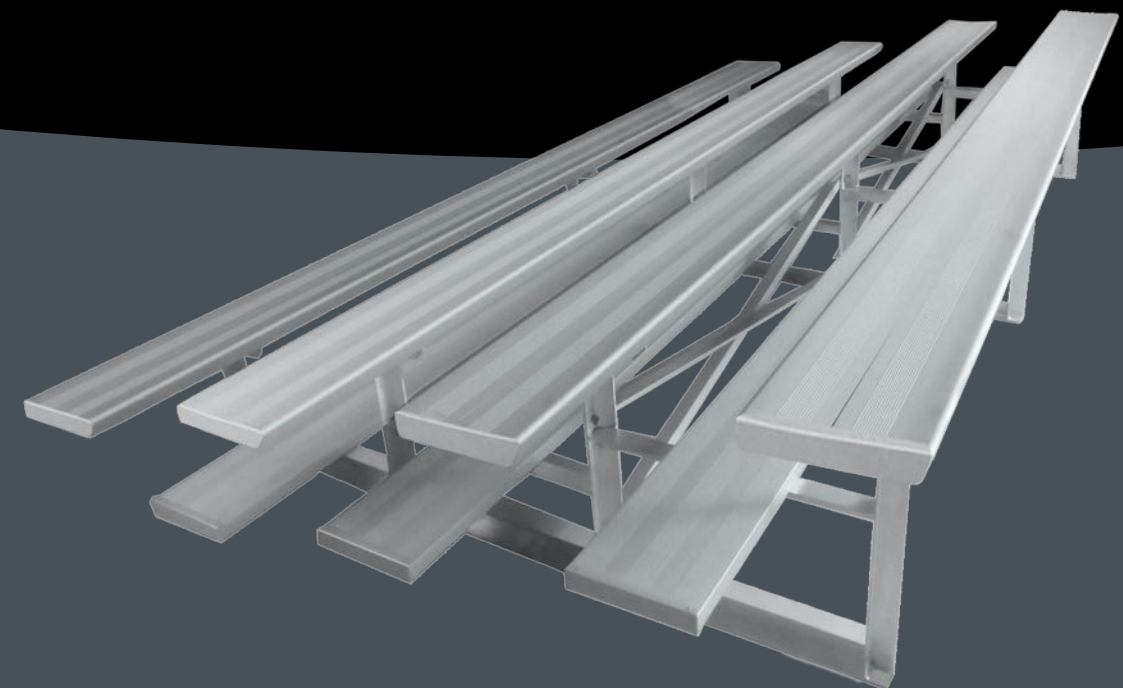
2007

Formula 1, Singapore



# **ANGO** **SERIES**

## Aluminum Bleacher



**Avant Seating**  
AVANT SPORTS INDUSTRIAL CO., LTD.

Address: Avant Industry Park,  
Zhoushi Road, Baoan District,  
Shenzhen, China

Tel: +86-755-29688357  
E-mail: sales@avant.com.cn  
www.avantseating.com  
www.avantbleacher.com



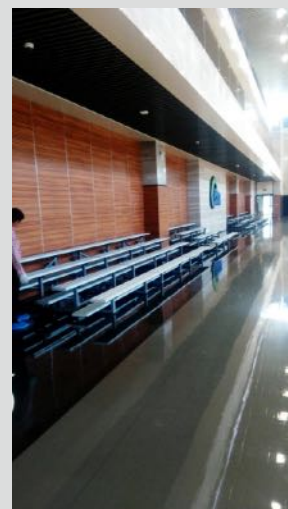
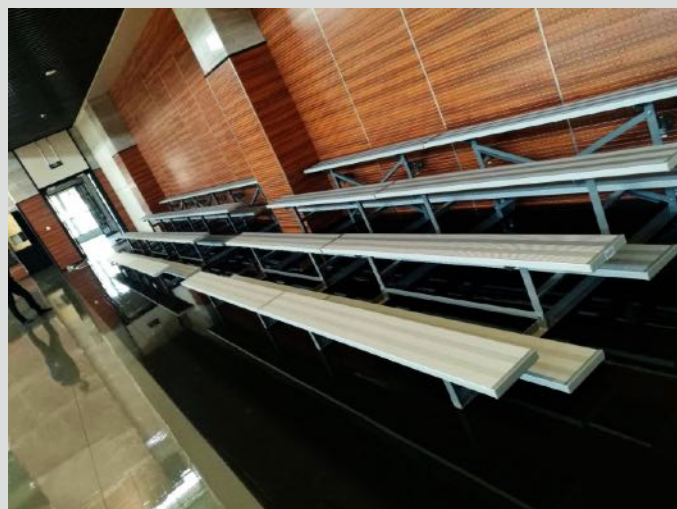
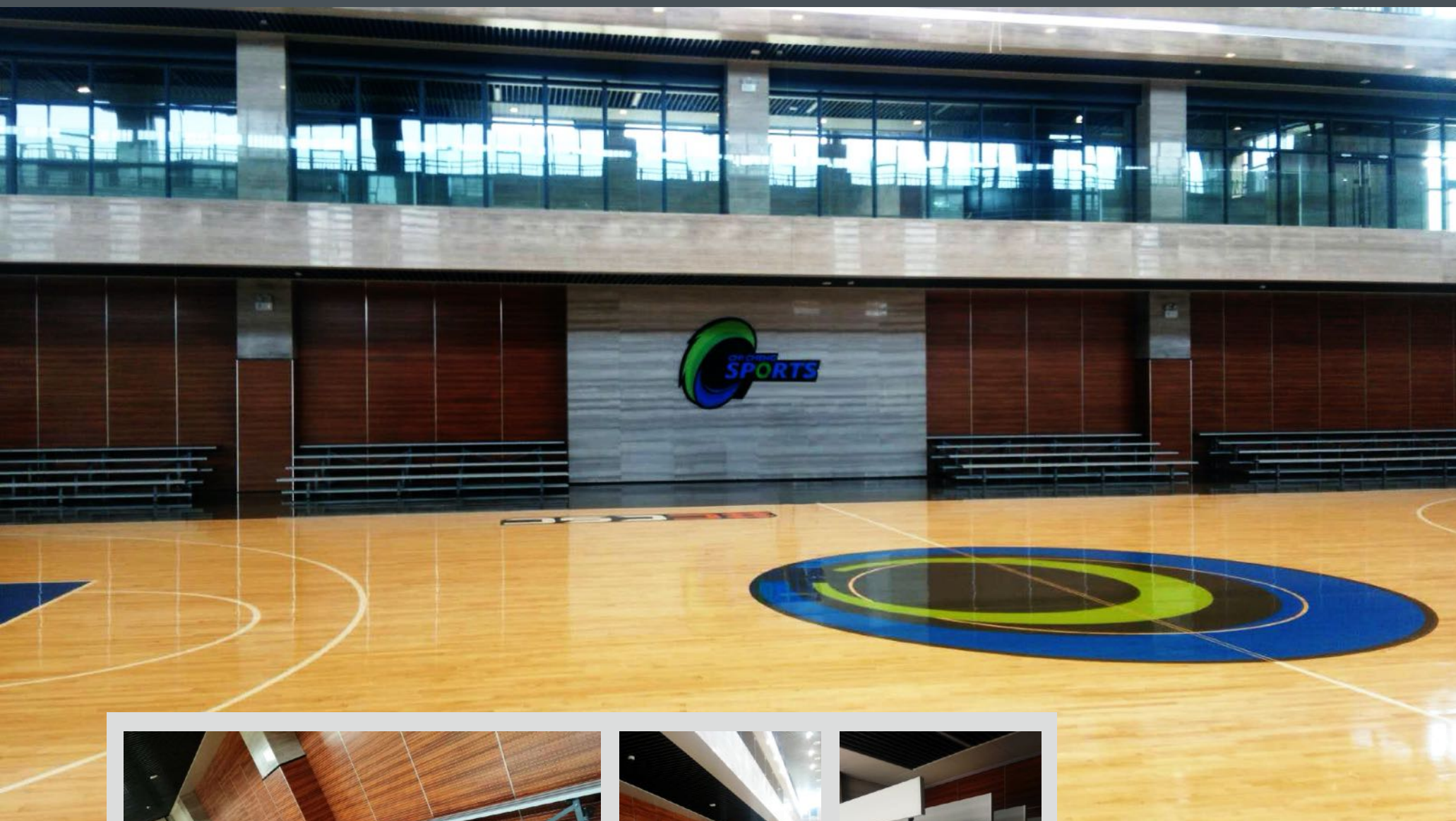


# ANGO SERIES

Aluminum Bleacher

## Content

Aluminum Bench.....	03
Tip and Roll Aluminum Bleacher.....	04
Fixed Aluminum Bleacher.....	06
Custom Options.....	07
End Capping Solution.....	09
Color Options.....	09
Specification.....	10
Warranty.....	10



### Application

The Ango Aluminum Bleacher Series is a perfect seating solution for both indoor and outdoor use especially in school gymnasiums, convention centers, church gyms and Rec Centers

### Codes and Standards

Compliant with IBC & ICC 300-2012 and EN13814-2004





# ANGO SERIES

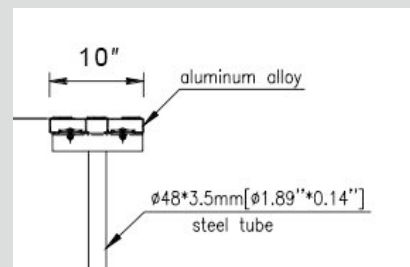
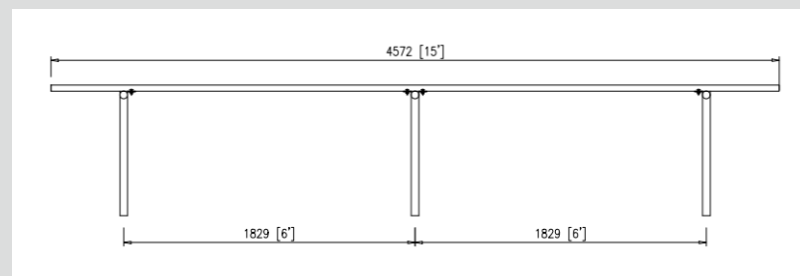
Aluminum Bleacher

## ANGO ALUMINUM BENCH

Safe • Durable • Flexible • Economical

### Product Feature:

- Specially designed End Cap eliminates snagging or pinching hazards
- Plank designed with slots to avoid slipping
- Low cost for assembly, installation and maintenance
- Multiple models available: portable and ground mounted



### Product Details:

- Length - 7.5', 15' and 21'
- Seat plank - 10" wide, 1.1/2" thick, extruded aluminum alloy, anodized
- Frame - powder coated aluminum angle or hot dipped galvanized steel tube

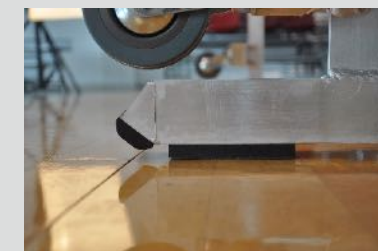


### Seat Options:

- Seat plank with round edge
- Manchurian ash wood plank (4/5" x 10")
- Aluminum backrest
- Cushion
- Lepai Seat (see picture on page 7)

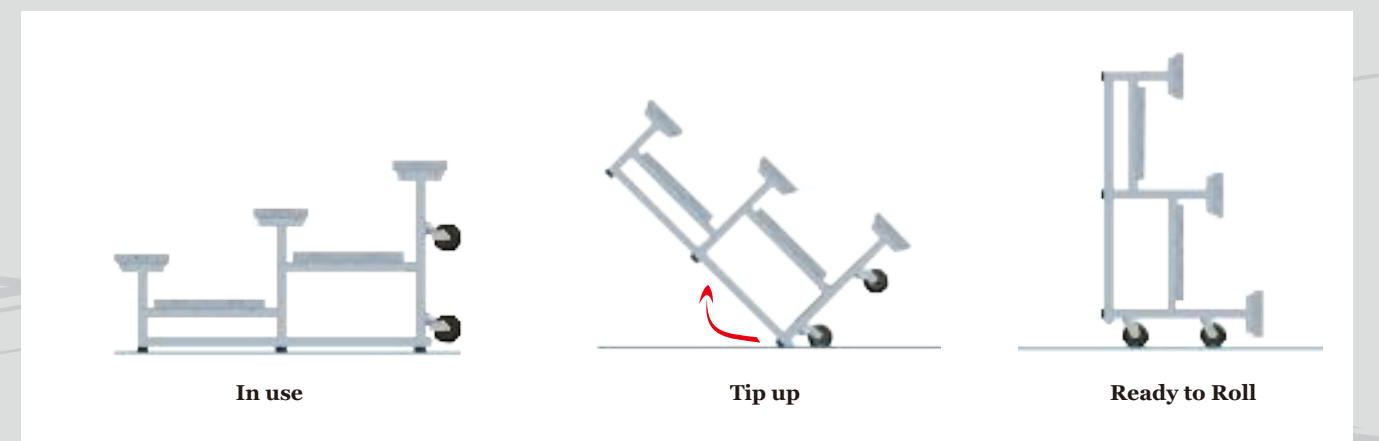
## ANGO TIP AND ROLL ALUMINUM BLEACHER

Safe • Durable • Flexible • Economical



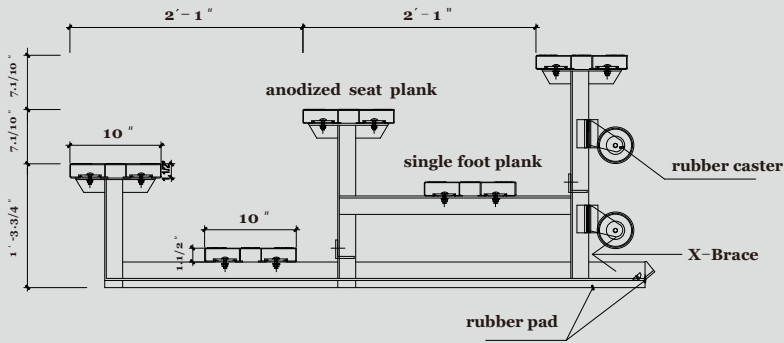
### Product Feature:

- Swivel caster wheels and rubber pads that won't damage your floor
- Specially designed End Cap eliminates snagging or pinching hazards
- Plank designed with slots to avoid slipping
- Lightweight and easy to maneuver or relocate for storage
- All parts prefabricated and easy to assemble on site
- Easy maintenance



Product Details:

- Row - 2, 3 and 4
- Length - 7.5', 15' and 21'
- Plank - 10" wide, 1.1/2" thick; extruded aluminum alloy, anodized
- Frame - aluminum angle, powder coated
- Bolt and Nut - dacromet coated

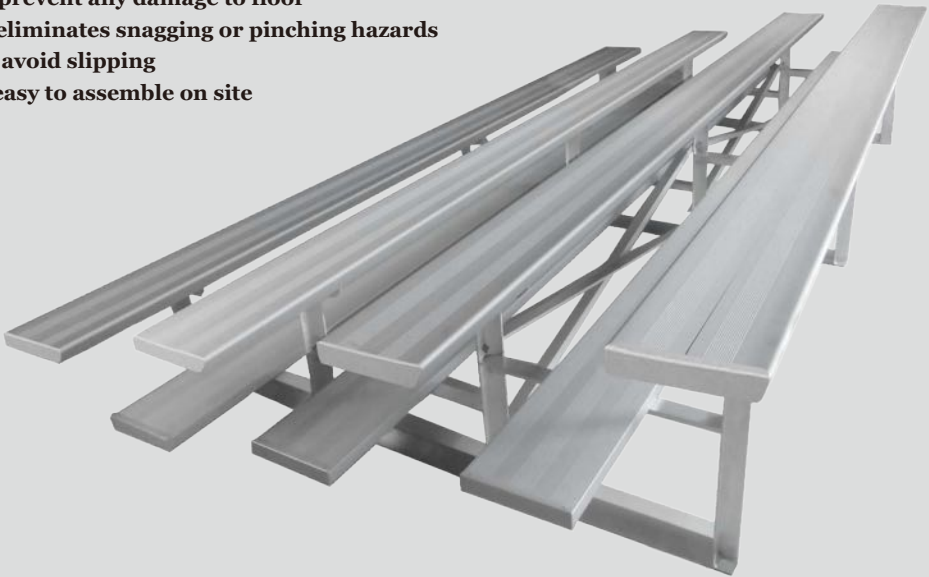


ANGO FIXED ALUMINUM BLEACHER

Safe • Durable • Comfortable • Economical

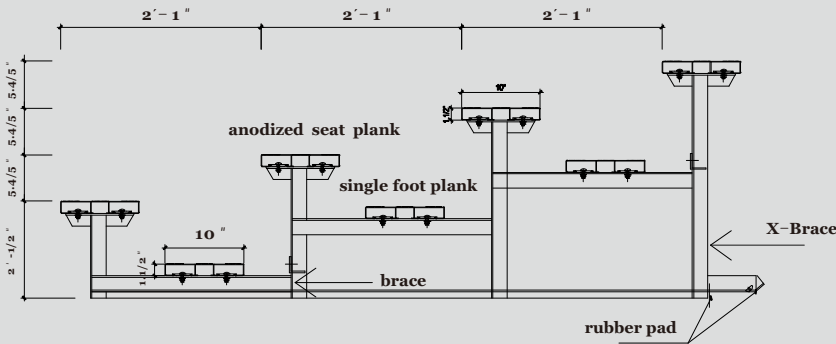
Product Feature:

- Rubber pads underneath to prevent any damage to floor
- Specially designed End Cap eliminates snagging or pinching hazards
- Plank designed with slots to avoid slipping
- All parts prefabricated and easy to assemble on site
- Easy maintenance



Product Details:

- Row - 2, 3 and 4
- Length - 7.5', 15' and 21'
- Plank - 10" wide, 1.1/2" thick, extruded aluminum alloy, anodized;
- Frame - aluminum angle, powder coated
- Bolt and Nut - dacromet coated



Seat Options:

- Seat plank with round edge
- Manchurian ash wood plank (4/5" x 10")
- Cushion
- Aluminum backrest
- Lepai Seat (see picture on page 8)
- Seat with backrest
- Double foot plank
- Protective Canopy

Gallery



Gallery





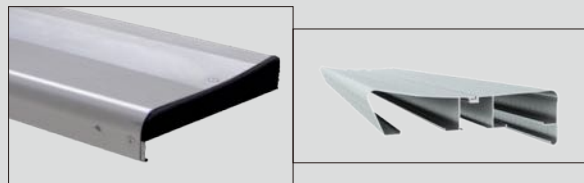


# ANGO SERIES

Aluminum Bleacher

## CUSTOM OPTIONS

### Seat Plank with Round Edge



» Improve the spectator experience

### Aluminum Backrest



» Detachable

### Manchurian Ash Wood Plank



### Cushion



### Lepai

Injected Molded with premium HDPE, One-Piece with drainage hole

Seat Height: 4.1/2"  
Seat Width: 1'- 5. 7/10"  
Seat Depth: 1'- 1/5"  
Center Distance: 1'- 6"



### Seat with Backrest

### - Borway

Injected Molded with premium PP, One-Piece with drainage hole

Seat Height: 9.3/5"  
Seat Width: 1'- 5.3/10"  
Seat Depth: 1'- 3.3/10"  
Center Distance: 1'- 6.9/10"



### - Salin

Blow Molded with premium HDPE, One-Piece with drainage hole

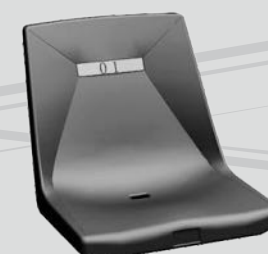
Seat Height: 6.3/5"  
Seat Width: 1'- 4.3/10"  
Seat Depth: 1'- 4.1/2"  
Center Distance: 1'- 5.7/10"



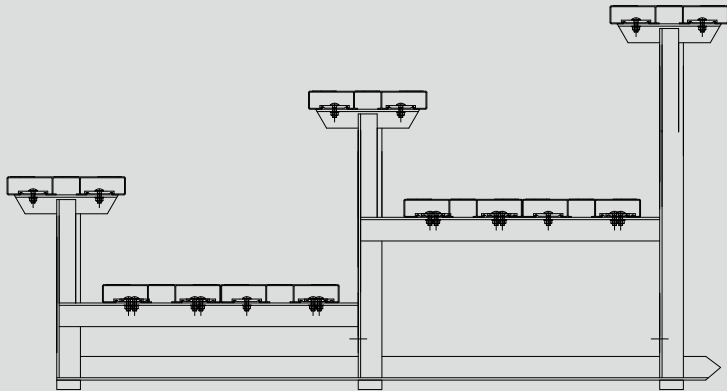
### - Diamond

Blow Molded with premium HDPE, One-Piece with drainage hole

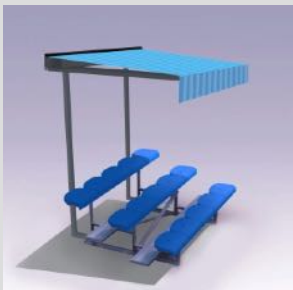
Seat Height: 1'- 4.9/10"  
Seat Width: 1'- 3.3/4"  
Seat Depth: 1'- 5"  
Center Distance: 1'- 6.9/10"



Double Foot Plank



Protective Canopy

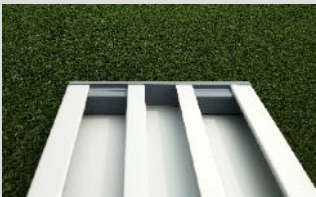
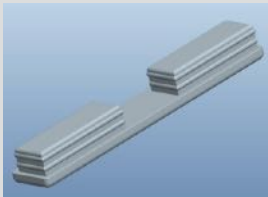


Stabilizer Bar



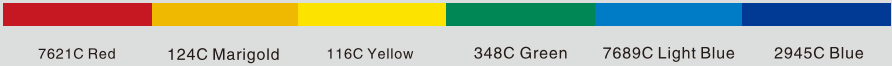
End Capping Solution

Color options available to customize graphics

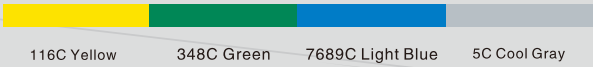


Color Options

For plastic and fabric:



For frame:



ANGO SERIES

Aluminum Bleacher

SPECIFICATION

Product	Rows	Specification	Seating Type	Accomodation	Ref.
Aluminum Bench	1	Plank Width: 10" , Plank Thickness: 1.1/2" , Length: 7.5'	Lepai / Aluminum Plank	5 persons	For other seat options please consult one of our Sales Reps
		Plank Width: 10" , Plank Thickness: 1.1/2" , Length: 15'		10 persons	
		Plank Width: 10" , Plank Thickness: 1.1/2" , Length: 21'		14 persons	
Aluminum Bleacher	2	Plank Width: 10" , Plank Thickness: 1.1/2" , Row Depth: 2'1" , Riser Height: 7.1/10" , Length: 7.5'	Lepai / Aluminum Plank	10 persons	
		Plank Width: 10" , Plank Thickness: 1.1/2" , Row Depth: 2'1" , Riser Height: 7.1/10" , Length: 15'		20 persons	
		Plank Width: 10" , Plank Thickness: 1.1/2" , Row Depth: 2'1" , Riser Height: 7.1/10" , Length: 21'		28 persons	
	3	Plank Width: 10" , Plank Thickness: 1.1/2" , Row Depth: 2'1" , Riser Height: 7.1/10" , Length: 7.5'	Lepai / Aluminum Plank	15 persons	
		Plank Width: 10" , Plank Thickness: 1.1/2" , Row Depth: 2'1" , Riser Height: 7.1/10" , Length: 15'		30 persons	
		Plank Width: 10" , Plank Thickness: 1.1/2" , Row Depth: 2'1" , Riser Height: 7.1/10" , Length: 21'		42 persons	
	4	Plank Width: 10" , Plank Thickness: 1.1/2" , Row Depth: 2'1" , Riser Height: 5.4/5" , Length: 7.5'	Lepai / Aluminum Plank	20 persons	
		Plank Width: 10" , Plank Thickness: 1.1/2" , Row Depth: 2'1" , Riser Height: 5.4/5" , Length: 15'		40 persons	
		Plank Width: 10" , Plank Thickness: 1.1/2" , Row Depth: 2'1" , Riser Height: 5.4/5" , Length: 21'		56 persons	

WARRANTY

2 years from original invoice date. Free from factory defects in workmanship and material